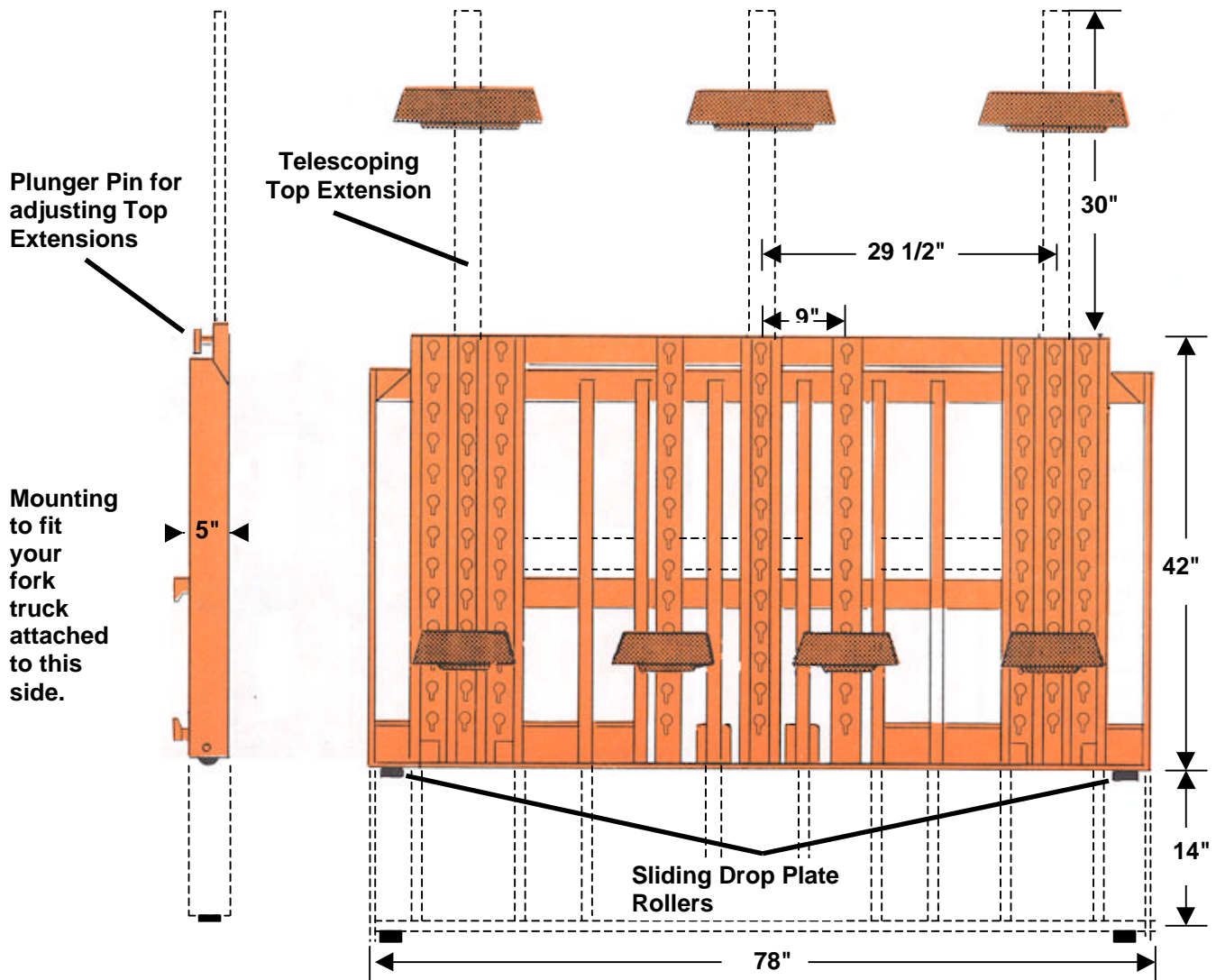




MODEL 4278

(Main Frame Part No. MF-427)



The model 4278 is designed to "Top Handle" products as triples and quads depending upon product size. Highway trailers can be loaded in minimum amount of time by loading the width of a trailer in one trip.

The profile of the model enables large and small products to be loaded to the ceiling line.

Model 4278 can also be used as a stacking unit as well as for trailer loading. It will mount on any make or model lift truck, completely mechanical, no hydraulic connections required for installation.

Folding Forks Are Not Available With This Unit.

These are some of the combinations that can be handled with Model 4278.

